

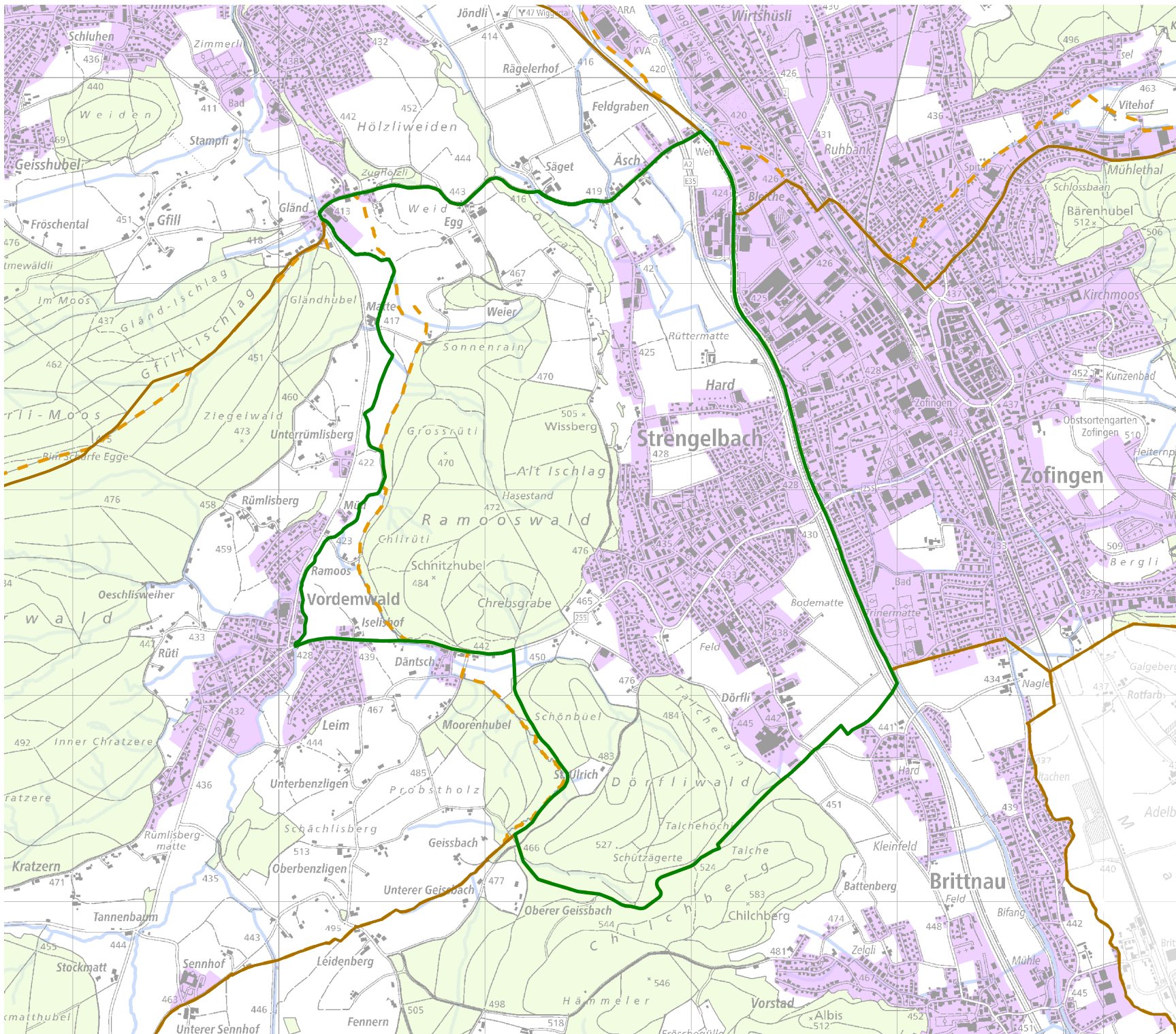
JAGDREVIERE IM KANTON AARGAU






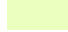

Jagdrevier Nr. 185 Strengelbach

BAU, VERKEHR UND UMWELT
Abteilung Wald

Kartenherstellung: 28.3.2018

Stand: 1.1.2018



-  Jagdrevier Nr. 185
-  Schonflächen
-  übrige Jagdreviere
-  Bauzonen (inkl Baugebiet)
-  Gemeindegrenzen
-  Wald
-  Gewässer

Quellen: Bundesamt für Landes-
topografie, Abteilung Wald des
Kantons Aargau