






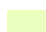

# JAGDREVIERE IM KANTON AARGAU

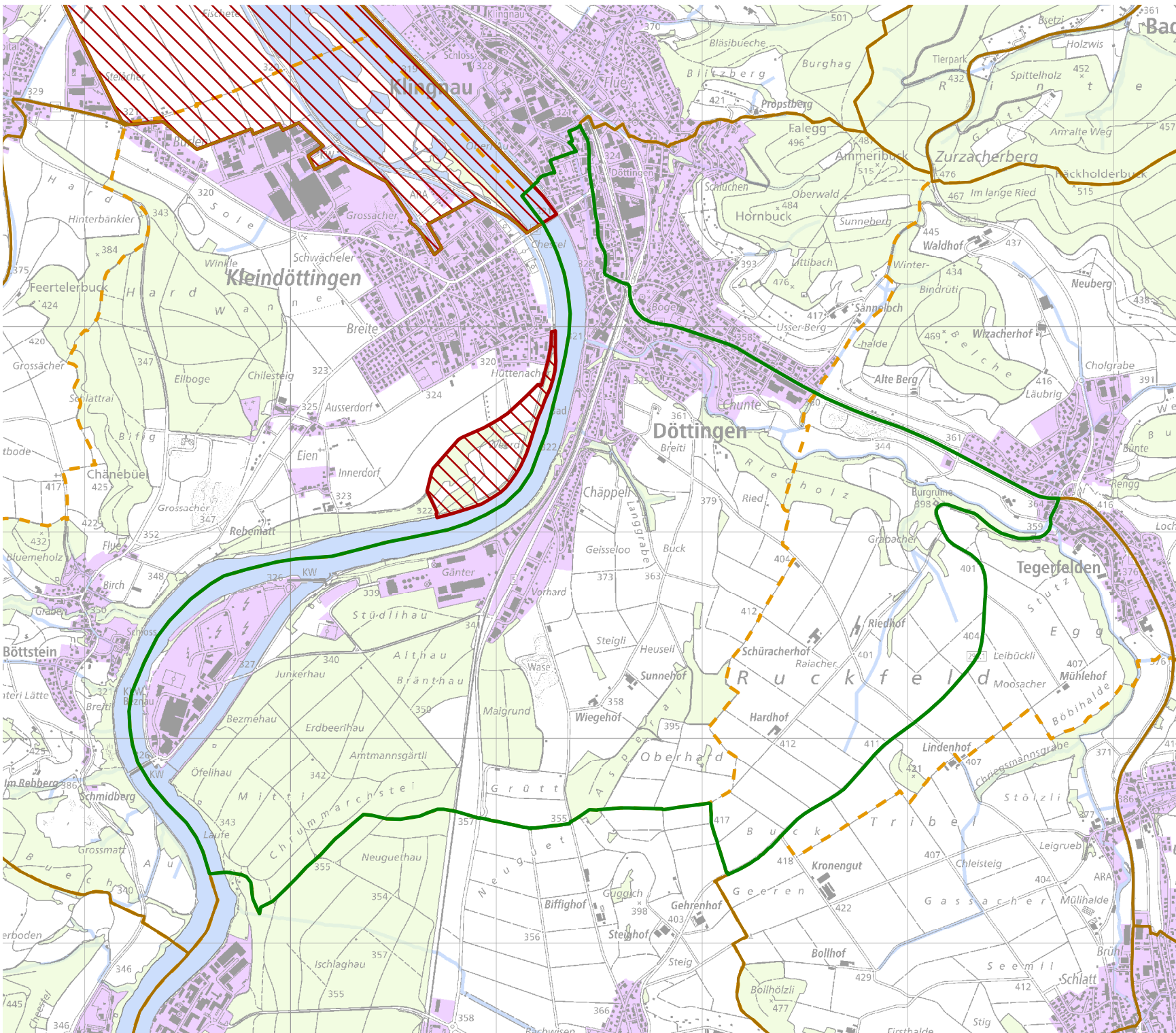
## Jagdrevier Nr. 192 Döttingen

**BAU, VERKEHR UND UMWELT**  
Abteilung Wald

Kartenherstellung: 28.3.2018 Stand: 1.1.2018

0 Km 0.5  
Massstab: 25'000

-  Jagdrevier Nr. 192
-  Schonflächen
-  übrige Jagdreviere
-  Bauzonen (inkl Baugebiet)
-  Gemeindegrenzen
-  Wald
-  Gewässer



Quellen: Bundesamt für Landes-  
topografie, Abteilung Wald des  
Kantons Aargau