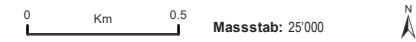







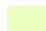

# JAGDREVIERE IM KANTON AARGAU

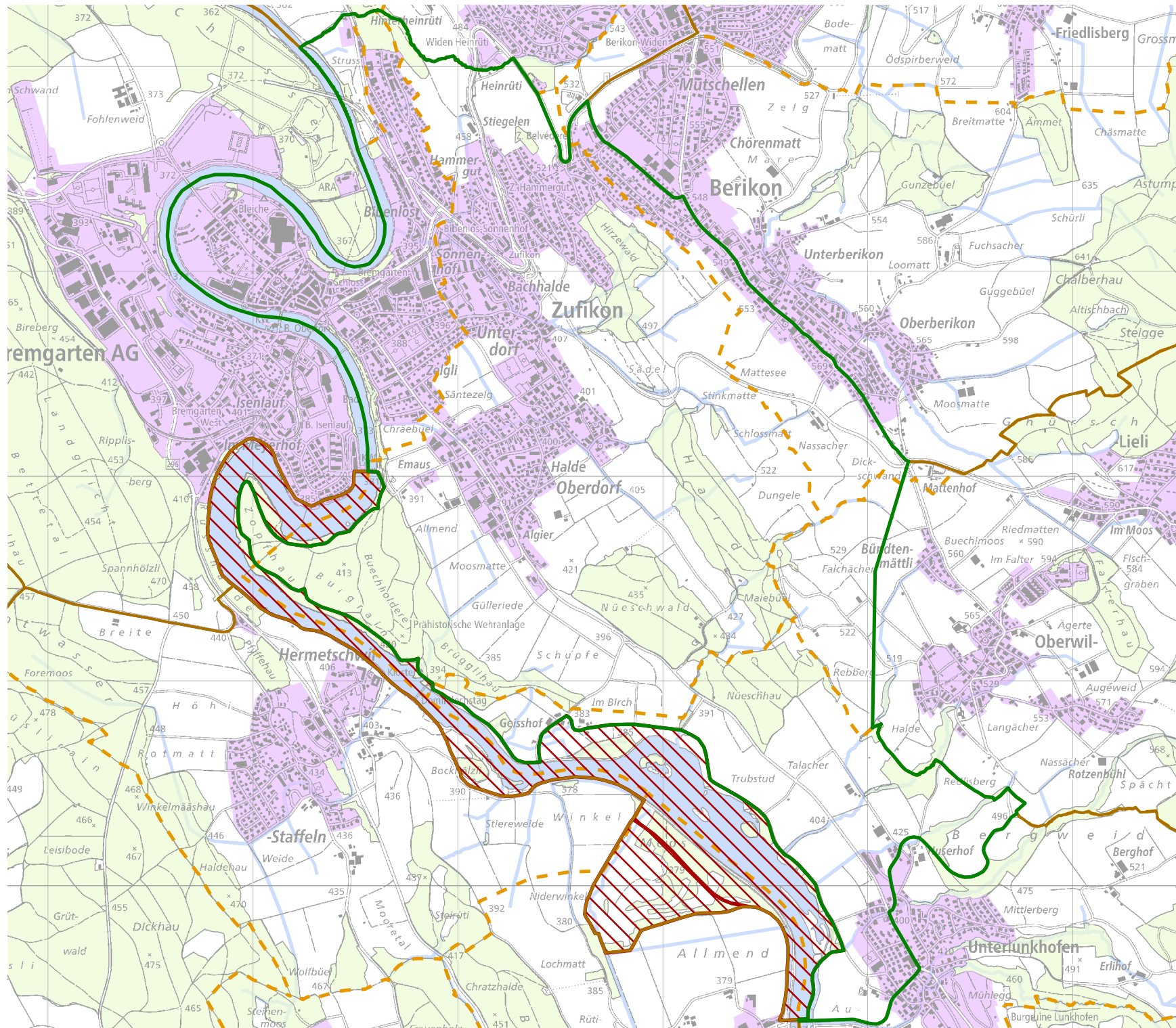
Jagdrevier Nr. 61  
Zufikon

**BAU, VERKEHR UND UMWELT**  
Abteilung Wald

Kartenherstellung: 28.3.2018 Stand: 1.1.2018



-  Jagdrevier Nr.61
-  Schonflächen
-  übrige Jagdreviere
-  Bauzonen (inkl Baugebiet)
-  Gemeindegrenzen
-  Wald
-  Gewässer



Quellen: Bundesamt für Landes-  
topografie, Abteilung Wald des  
Kantons Aargau