






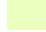

JAGDREVIERE IM KANTON AARGAU

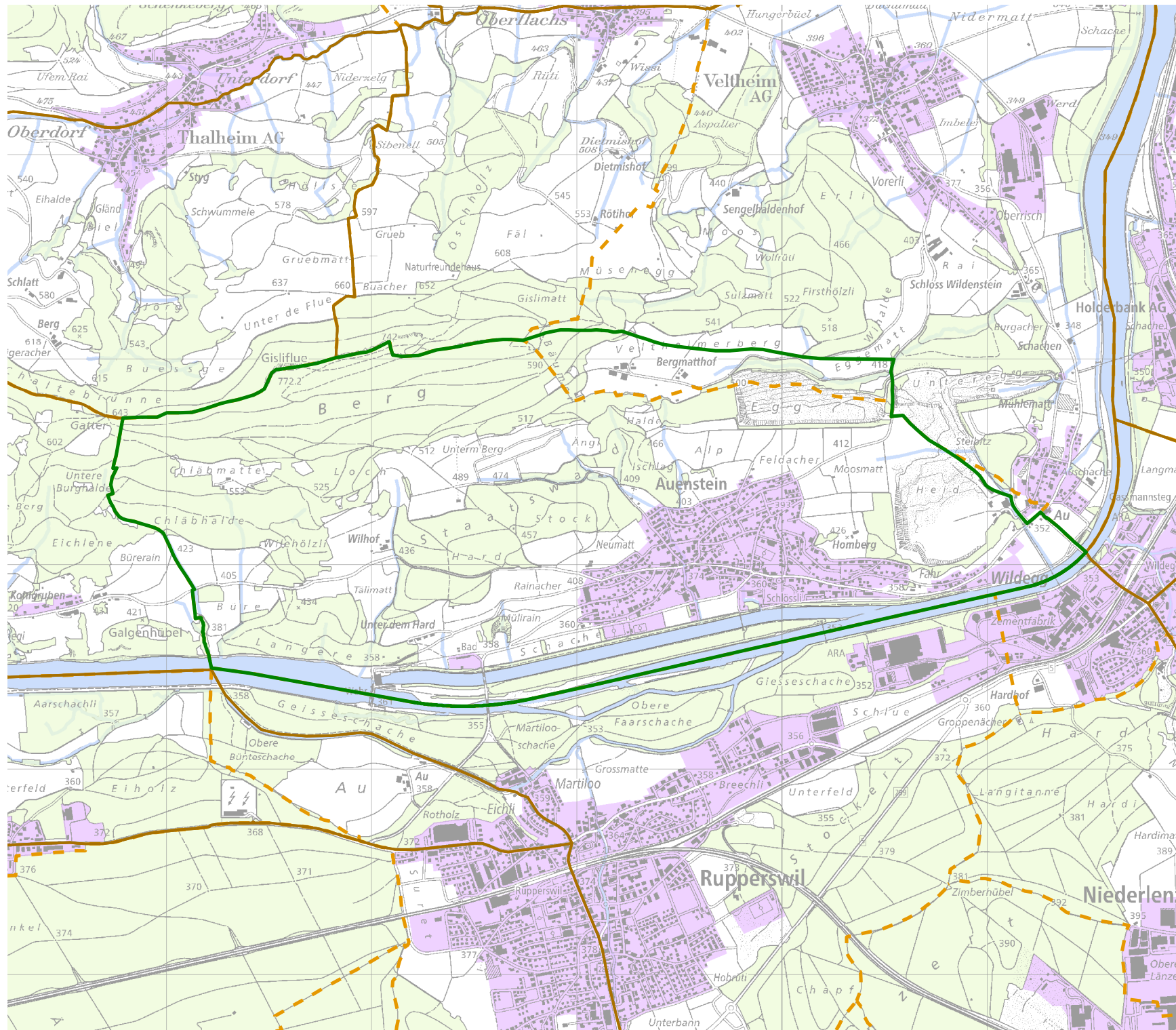
Jagdrevier Nr. 62 Auenstein

BAU, VERKEHR UND UMWELT
Abteilung Wald

Kartenherstellung: 28.3.2018 Stand: 1.1.2018

0 Km 0.5
Massstab: 25'000

-  Jagdrevier Nr. 62
-  Schonflächen
-  übrige Jagdreviere
-  Bauzonen (inkl Baugebiet)
-  Gemeindegrenzen
-  Wald
-  Gewässer



Quellen: Bundesamt für Landes-
topografie, Abteilung Wald des
Kantons Aargau