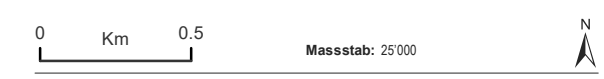





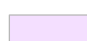

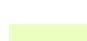

JAGDREVIERE IM KANTON AARGAU

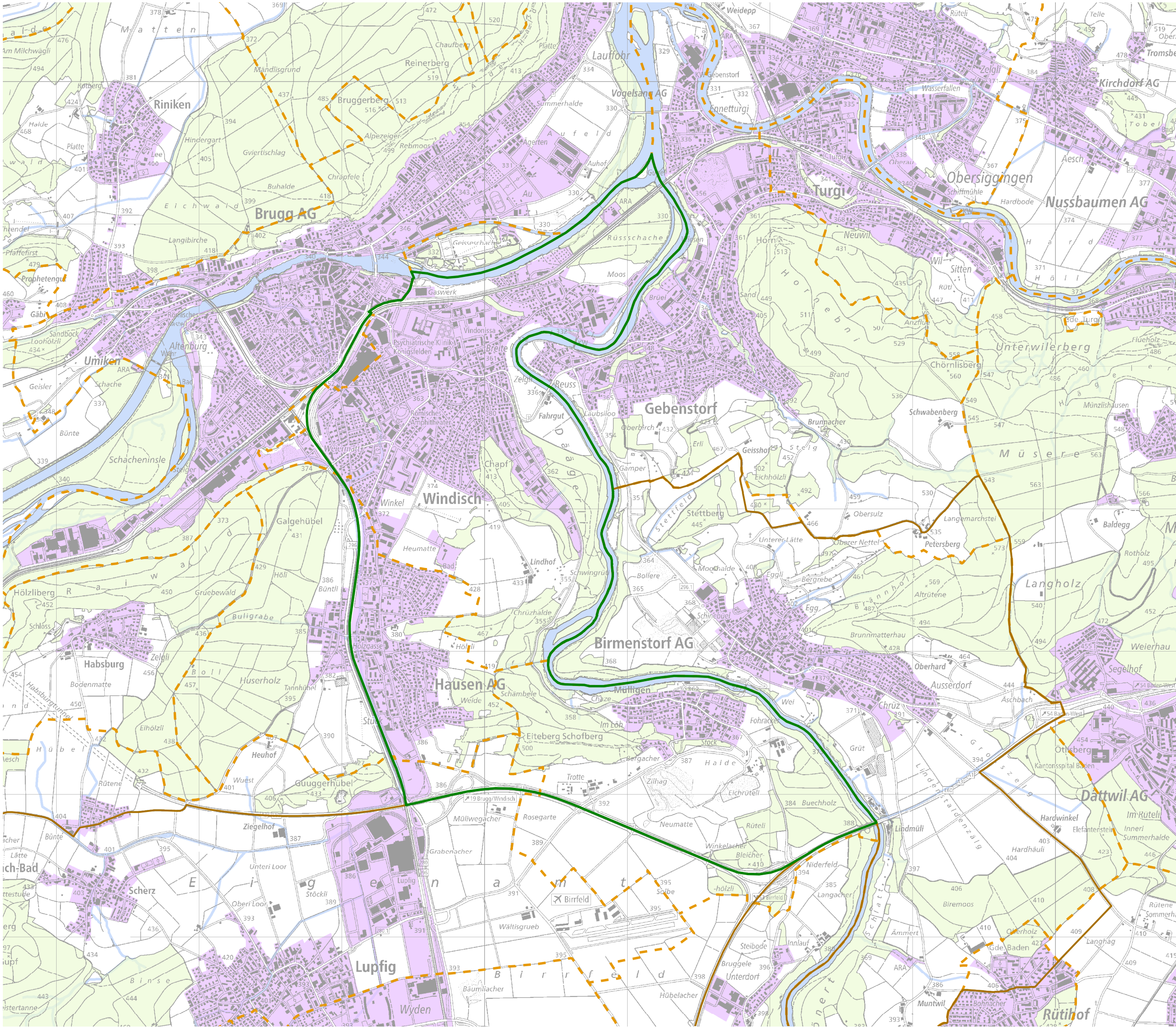
Jagdrevier Nr.84
Windisch

BAU, VERKEHR UND UMWELT
Abteilung Wald

Kartenherstellung: 28.3.2018 Stand: 1.1.2018



-  Jagdrevier Nr.84
-  Schonflächen
-  übrige Jagdreviere
-  Bauzonen (inkl Baugebiet)
-  Gemeindegrenzen
-  Wald
-  Gewässer



Quellen: Bundesamt für Landestopografie, Abteilung Wald des Kantons Aargau